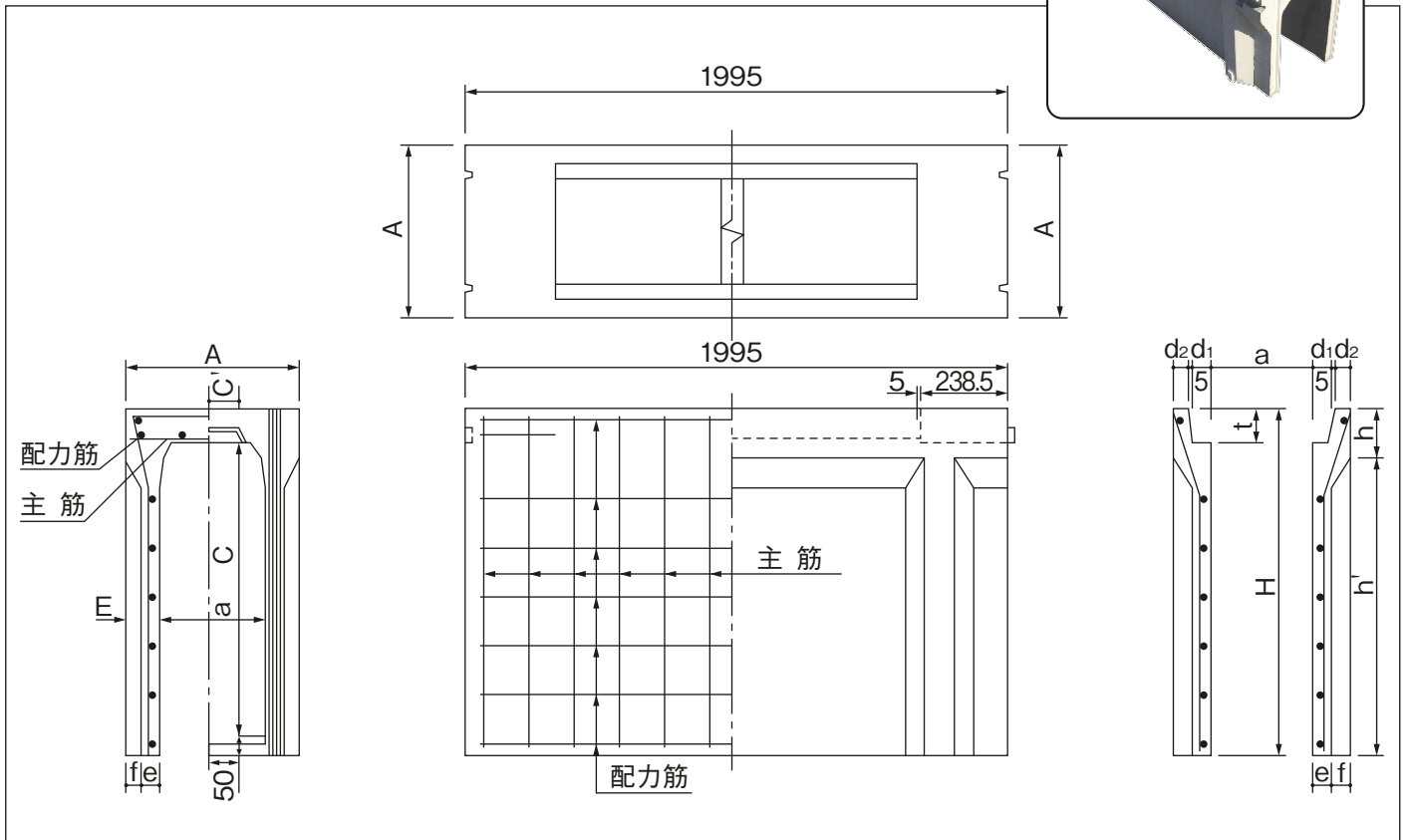
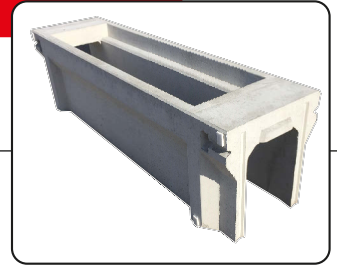


PU可変側溝本体



寸法・配筋・重量表

単位：mm

| 呼び名 | 寸法 | | | | | | | | | | | | | 参考重量 (kg) | 備考 |
|-----|-----|-----|-------|-----|----|----|----|----|-----|-----|-------|-----|-------|-----------|----|
| | A | a | C | C' | d1 | d2 | e | f | E | h | h' | t | H | | |
| 250 | 460 | 250 | 250 | 100 | 55 | 45 | 50 | 55 | 105 | 120 | 290 | 90 | 410 | 318 | |
| 250 | 460 | 250 | 300 | 100 | 55 | 45 | 50 | 55 | 105 | 120 | 340 | 90 | 460 | 344 | |
| 250 | 460 | 250 | 400 | 100 | 55 | 45 | 50 | 55 | 105 | 120 | 440 | 90 | 560 | 396 | |
| 250 | 460 | 250 | 500 | 100 | 55 | 45 | 50 | 55 | 105 | 120 | 540 | 90 | 660 | 448 | |
| 300 | 520 | 300 | 300 | 110 | 55 | 50 | 55 | 55 | 110 | 140 | 320 | 95 | 460 | 375 | |
| 300 | 520 | 300 | 400 | 110 | 55 | 50 | 55 | 55 | 110 | 140 | 420 | 95 | 560 | 436 | |
| 300 | 520 | 300 | 500 | 110 | 55 | 50 | 55 | 55 | 110 | 140 | 520 | 95 | 660 | 497 | |
| 300 | 520 | 300 | 600 | 110 | 55 | 50 | 65 | 45 | 110 | 140 | 620 | 95 | 760 | 598 | |
| 300 | 520 | 300 | 700 | 110 | 55 | 50 | 65 | 45 | 110 | 140 | 720 | 95 | 860 | 667 | |
| 300 | 520 | 300 | 800 | 110 | 55 | 50 | 75 | 35 | 110 | 140 | 820 | 95 | 960 | 795 | |
| 300 | 520 | 300 | 900 | 110 | 55 | 50 | 75 | 35 | 110 | 140 | 920 | 95 | 1,060 | 872 | |
| 300 | 520 | 300 | 1,000 | 110 | 55 | 50 | 85 | 25 | 110 | 140 | 1,020 | 95 | 1,160 | 1,028 | |
| 300 | 520 | 300 | 1,100 | 110 | 55 | 50 | 85 | 25 | 110 | 140 | 1,120 | 95 | 1,260 | 1,114 | |
| 400 | 630 | 400 | 400 | 120 | 55 | 55 | 60 | 55 | 115 | 140 | 430 | 110 | 570 | 468 | |
| 400 | 630 | 400 | 500 | 120 | 55 | 55 | 60 | 55 | 115 | 140 | 530 | 110 | 670 | 535 | |
| 400 | 630 | 400 | 600 | 120 | 55 | 55 | 60 | 55 | 115 | 140 | 630 | 110 | 770 | 600 | |
| 400 | 630 | 400 | 700 | 120 | 55 | 55 | 70 | 45 | 115 | 140 | 730 | 110 | 870 | 717 | |

※排水ドレン仕様も製造可能

寸法・配筋・重量表

単位：mm

| 呼び名 | 寸 法 | | | | | | | | | | | | | 参 考 重 量 (kg) | 備 考 |
|-----|-----|-----|-------|-----|----|----|-----|----|-----|-----|-------|-----|-------|--------------------|-----|
| | A | a | C | C' | d1 | d2 | e | f | E | h | h' | t | H | | |
| 400 | 630 | 400 | 800 | 120 | 55 | 55 | 70 | 45 | 115 | 140 | 830 | 110 | 970 | 791 | |
| 400 | 630 | 400 | 900 | 120 | 55 | 55 | 80 | 35 | 115 | 140 | 930 | 110 | 1,070 | 935 | |
| 400 | 630 | 400 | 1,000 | 120 | 55 | 55 | 80 | 35 | 115 | 140 | 1,030 | 110 | 1,170 | 1,017 | |
| 400 | 630 | 400 | 1,100 | 120 | 55 | 55 | 90 | 25 | 115 | 140 | 1,130 | 110 | 1,270 | 1,190 | |
| 400 | 630 | 400 | 1,200 | 120 | 55 | 55 | 90 | 25 | 115 | 140 | 1,230 | 110 | 1,370 | 1,280 | |
| 500 | 750 | 500 | 500 | 135 | 60 | 60 | 70 | 55 | 125 | 155 | 530 | 125 | 685 | 733 | |
| 500 | 750 | 500 | 600 | 135 | 60 | 60 | 70 | 55 | 125 | 155 | 630 | 125 | 785 | 809 | |
| 500 | 750 | 500 | 700 | 135 | 60 | 60 | 70 | 55 | 125 | 155 | 730 | 125 | 885 | 884 | |
| 500 | 750 | 500 | 800 | 135 | 60 | 60 | 85 | 40 | 125 | 155 | 830 | 125 | 985 | 1,050 | |
| 500 | 750 | 500 | 900 | 135 | 60 | 60 | 85 | 40 | 125 | 155 | 930 | 125 | 1,085 | 1,137 | |
| 500 | 750 | 500 | 1,000 | 135 | 60 | 60 | 85 | 40 | 125 | 155 | 1,030 | 125 | 1,185 | 1,225 | |
| 500 | 750 | 500 | 1,100 | 135 | 60 | 60 | 95 | 30 | 125 | 155 | 1,130 | 125 | 1,285 | 1,401 | |
| 500 | 750 | 500 | 1,200 | 135 | 60 | 60 | 95 | 30 | 125 | 155 | 1,230 | 125 | 1,385 | 1,497 | |
| 500 | 750 | 500 | 1,300 | 135 | 60 | 60 | 95 | 30 | 125 | 155 | 1,330 | 125 | 1,485 | 1,593 | |
| 600 | 870 | 600 | 600 | 150 | 65 | 65 | 75 | 60 | 135 | 175 | 625 | 140 | 800 | 833 | |
| 600 | 870 | 600 | 700 | 150 | 65 | 65 | 75 | 60 | 135 | 175 | 725 | 140 | 900 | 1,014 | |
| 600 | 870 | 600 | 800 | 150 | 65 | 65 | 75 | 60 | 135 | 175 | 825 | 140 | 1,000 | 1,096 | |
| 600 | 870 | 600 | 900 | 150 | 65 | 65 | 90 | 45 | 135 | 175 | 925 | 140 | 1,100 | 1,276 | |
| 600 | 870 | 600 | 1,000 | 150 | 65 | 65 | 90 | 45 | 135 | 175 | 1,025 | 140 | 1,200 | 1,370 | |
| 600 | 870 | 600 | 1,100 | 150 | 65 | 65 | 90 | 45 | 135 | 175 | 1,125 | 140 | 1,300 | 1,463 | |
| 600 | 870 | 600 | 1,200 | 150 | 65 | 65 | 100 | 35 | 135 | 175 | 1,225 | 140 | 1,400 | 1,651 | |
| 600 | 870 | 600 | 1,300 | 150 | 65 | 65 | 100 | 35 | 135 | 175 | 1,325 | 140 | 1,500 | 1,753 | |
| 600 | 870 | 600 | 1,400 | 150 | 65 | 65 | 100 | 35 | 135 | 175 | 1,425 | 140 | 1,600 | 1,854 | |

※受注生産の物もありますので、打合せの上ご発注下さい。 ※排水ドレン仕様も製造可能